



**Parent Teacher
Home Visits**

CONTACT

2411 15th St, Sacramento, CA 95818
info@pthvp.org / www.pthvp.org / (916)448-5290



Educators and Families on the Same Team for Student Success

Families are the experts on their children. Teachers are the experts in the classroom. Both want the best for their students. Parent Teacher Home Visits are voluntary appointments designed to build a trusting relationship between equal partners, so that the most important adults in a child's life can work together to support the child's learning and growth. PTHV is also a national nonprofit organization implementing an evidence-based home visit strategy in hundreds of districts across the nation, bridging the gap between home and school, fostering positive communication, breaking down barriers of bias and misunderstanding, and accelerating student and school success.



PTHV Works

Our rigorous evaluations of our model prove that Parent Teacher Home Visits:

- Increase students' academic and developmental growth
- Build skills and understanding in both teachers and families
- Improve school climate, attendance and test scores
- Increase cultural competence and connection
- Build community support for local schools

In other words, students do better in schools where teachers visit students' families at home. Parent Teacher Home Visits are proven, cost-effective, and replicable in a variety of district settings. Our relational approach to home visits is transforming public schools in rural, suburban and urban communities across the country.

The PTHV Model



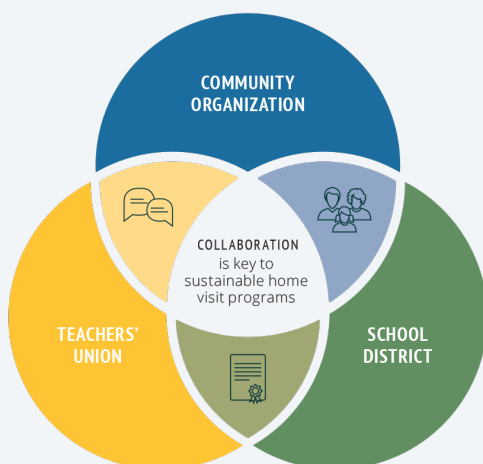
The success of Parent Teacher Home Visits relies on training teachers and staff to develop meaningful relationships with the families of their students, starting with voluntary home visits. We're intentional about visits taking place in a neutral setting, away from the school campus. If both desire, parents and teachers have met in parks, community centers, and other public locations depending on comfort and availability. The intention is to show parents that the teacher cares and is willing to go beyond the comfort zone of the school building in extending friendship. Home visits also remove the burden of families having to go to the school building at a set time, entering an environment that, for some, has not been the most welcoming for them or their children. Home visits create a level playing field. They are short, 30-40 minute conversations, in which educators listen, ask questions, and make observations that they can take back to their classroom to improve instruction for the learner. As a two-visit model, PTHV encourages the initial, ice-breaking visit to occur in the summer or early fall, followed by ongoing communication throughout the term, and a second visit to focus on academics or any other relevant issue to the student or family.





All Parent Teacher Home Visit practice implementations have these guiding elements in common. A school or district may, and is encouraged to, adapt other parts of the program for a community's needs. However, in every location we follow these five core practices that lead to respect, communication and collaboration. These practices have been studied by external validators and they represent the essential factors that drive the academic and social-emotional success that all our implementations enjoy. Fidelity to this model is critical.

Key PTHV Partners



PTHV was started by a group of parents and community organizers in a low-income neighborhood of Sacramento, CA. Together, with teacher allies, they created an empowerment model of building relationships, supported by the district, the teachers' union, the families, and the community. This collaborative foundation, when repeated in other implementations, has proven to be the secret sauce in sustaining a healthy, long-term Parent Teacher Home Visits practice.



www.pthvp.org



LEARN MORE

For more information about the power of home visits and the research behind it, please visit pthvp.org. If you have questions or would like to explore how home visits could make a difference in your school community, please call us (916) 448-5290 or email info@pthvp.org.